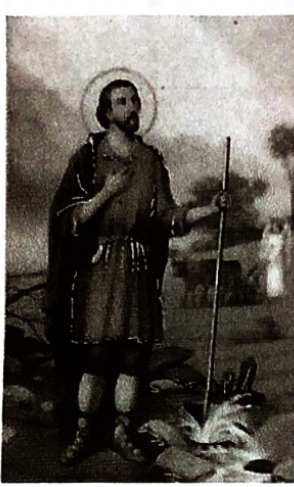


## Area catholic parishes now part of St. Isidore the Farmer Parish

On July 1, six area Catholic parishes - St. Alphonsus in McDonald, St. Patrick in Noblestown, St. Columbkille in Imperial, St. Ann in Bulger, St. Michael in Avella and Our Lady of Lourdes in Burgettstown - became one catholic parish: St. Isidore the Farmer Parish. In all, 61 Parishes in the Roman Catholic Diocese of Pittsburgh have been consolidated into 15 parishes. The consolidation was announced by Bishop David Zubik earlier this year.



St. Isidore the Farmer

While some churches in the diocese did close, all of the churches that are now part of St. Isidore the Farmer Parish will remain open for catholic Masses every weekend. This is especially important because of the rich liturgical history of each of the churches. For over 700 years of catholic faith, many generations of families have called these churches their religious and sacred places of worship.

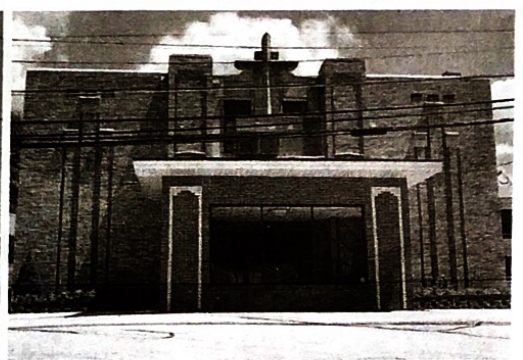
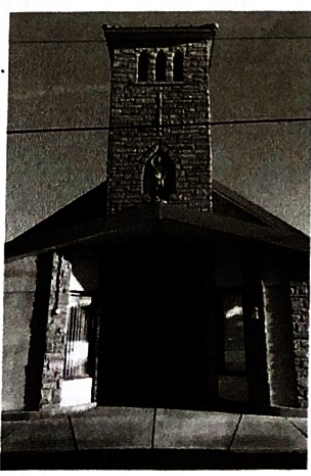
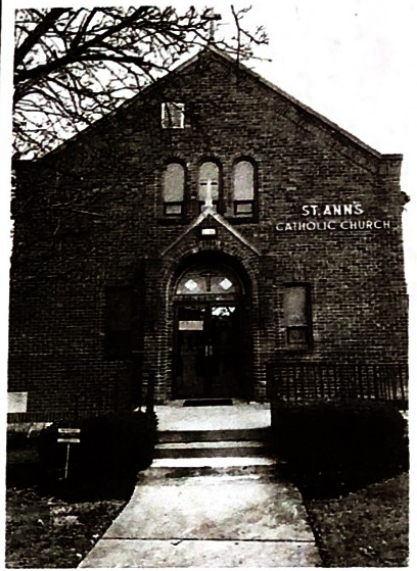
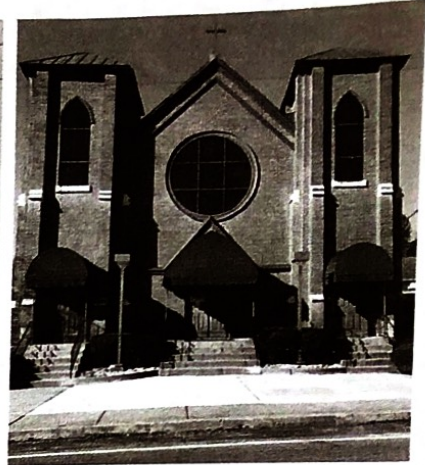
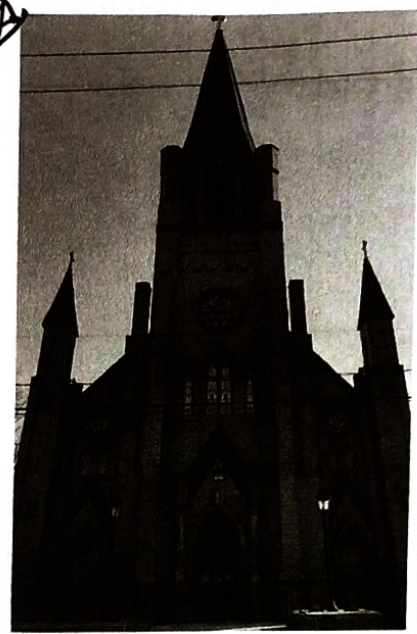
Canonized in 1622, St. Isidore the Farmer had deep religious instincts and became the patron saint of farmers and rural communities. He was known for his hard labor and devotion to God, all common attributes that are reflective of the history of the people of the area served by the six parishes.

St. Isidore the Farmer Parish is served by pastor, Rev. Harry Bielewicz, parochial vicar, Rev. Zachary Galiyas, and, in residence, Rev. Benedetto P. Vaghetto, VJ, JCL. The parish continues to hold Masses in six church buildings and to hold parking lot Masses during the COVID-19 pandemic. Parking lot Masses allow people to hear Mass in their cars and then receive holy communion.

For information on church seating restrictions and information on parking lot Masses, call (724) 695-7325.

In addition, anyone who would like to join the new parish or would like to reconnect with their catholic faith can call (724) 695-7325.

Visit the parish online at: [stisidorethefarmer.org](http://stisidorethefarmer.org). All are welcome to attend weekend Masses.



FROM TOP LEFT CLOCKWISE: St. Alphonsus, St. Patrick, St. Ann, St. Columbkille, St. Michael and Our Lady of Lourdes are all now part of St. Isidore the Farmer Parish.

### Control the Spread Together.

Wearing a mask keeps our community members safe.  
Wear a mask when visiting local businesses.

Thank You.

